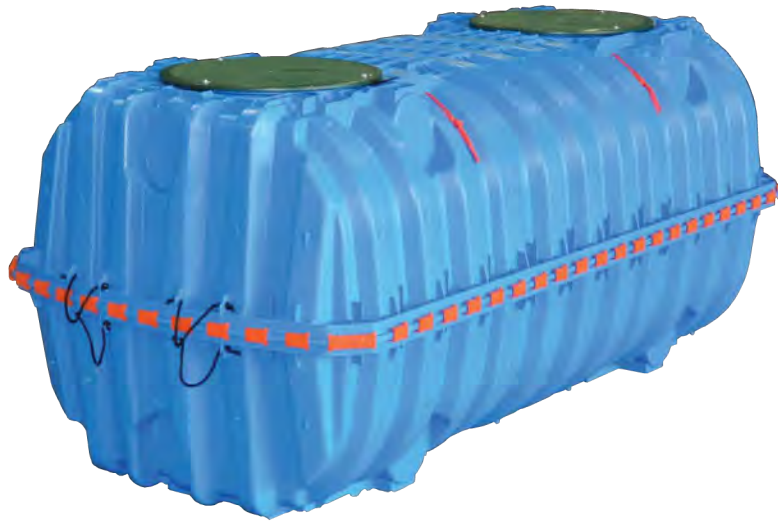


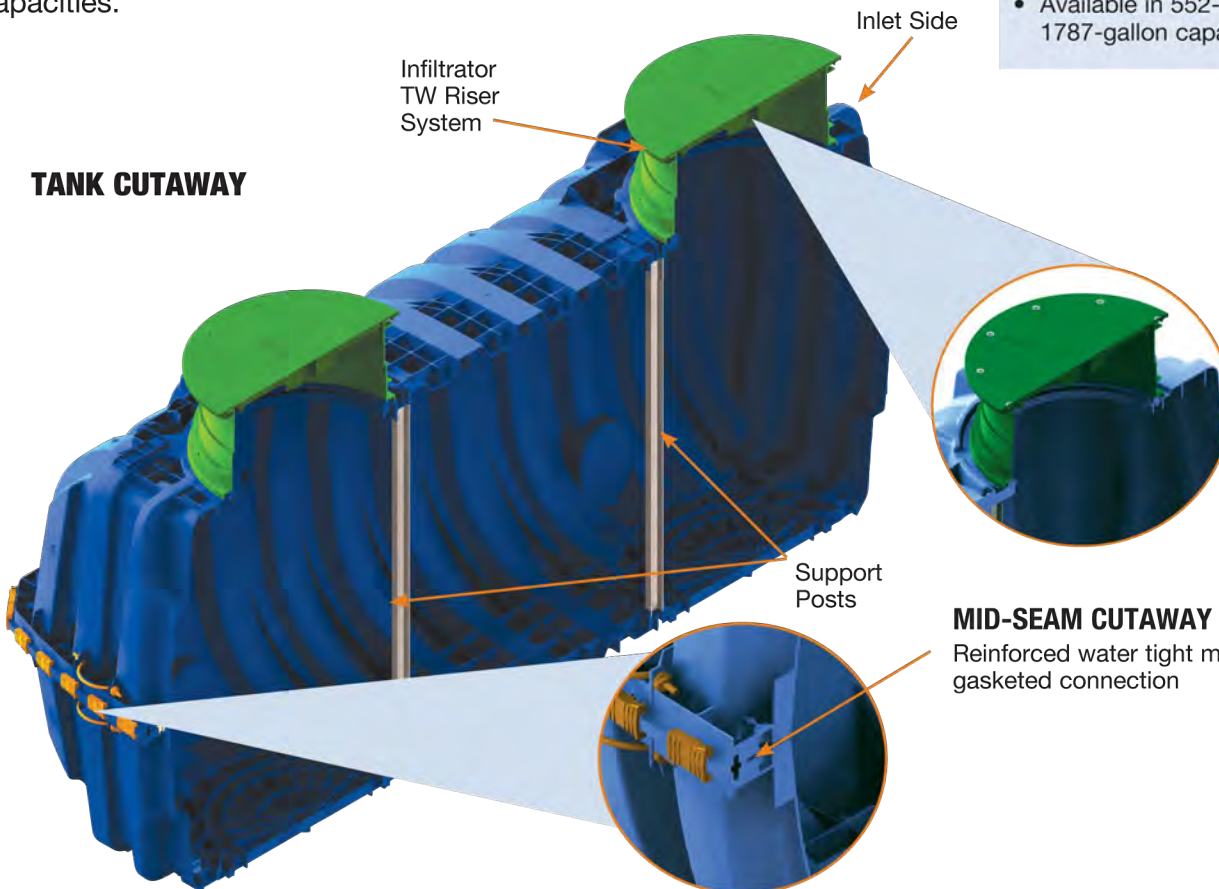
## Features & Benefits

- Strong injection-molded polypropylene construction
- NSF/ANSI-61-certified for potable uses
- Lightweight plastic construction and inboard lifting lugs allow for easy delivery and handling
- Integral heavy-duty green lids that interconnect with TW™ risers and pipe riser solutions
- Structurally reinforced access ports eliminate distortion during installation and pump-outs
- Reinforced structural ribbing and fiberglass bulkheads offer additional strength
- Can be installed with 6" to 48" of cover
- Can be pumped dry
- Suitable for use as a potable pump tank, rainwater harvesting tank or water storage tank
- No special installation, backfill or water filling procedures are required
- Available in 552-gallon, 1287-gallon and 1787-gallon capacities



The Infiltrator IM-Series Potable water tanks are lightweight, strong and durable. These potable, watertight tank designs are offered with Infiltrator's potable heavy-duty lids. Infiltrator injection-molded tanks provide a revolutionary improvement in plastic tank design, offering long-term exceptional strength and watertightness. Infiltrator's IM-Series Potable water tanks are available in 552-gallon, 1287-gallon and 1787-gallon capacities.

## TANK CUTAWAY



### HEAVY DUTY LID CUTAWAY

Reinforced 24" structural access port

### MID-SEAM CUTAWAY

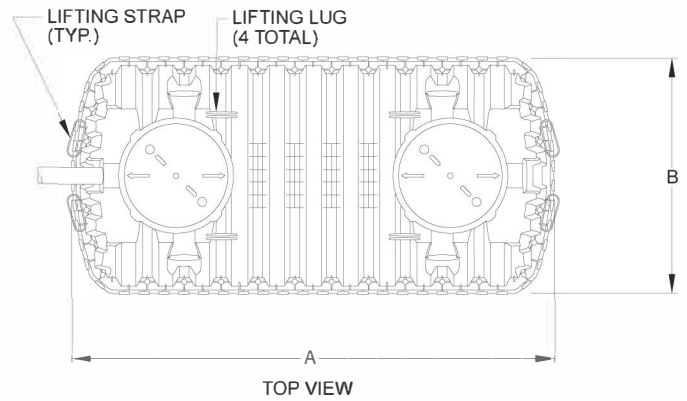
Reinforced water tight mid-seam gasketed connection



# IM-Series Potable Water Tanks

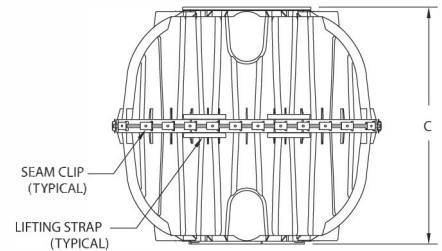
## General Specifications and Illustrations

The IM-Series Potable water tanks are injection-molded, two piece, mid-seam plastic tanks. The injection-molded plastic design allows for a mid-seam joint that has precise dimensions for accepting an engineered EPDM gasket. Infiltrator's gasket design utilizes technology from the water industry to deliver proven means of maintaining a watertight seal. The two-piece design is permanently fastened using a series of non-corrosive plastic alignment dowels and locking seam clips. The IM-Series Potable water tanks are assembled and sold through a network of certified Infiltrator distributors and are NSF/ASNI-61-certified for potable uses.

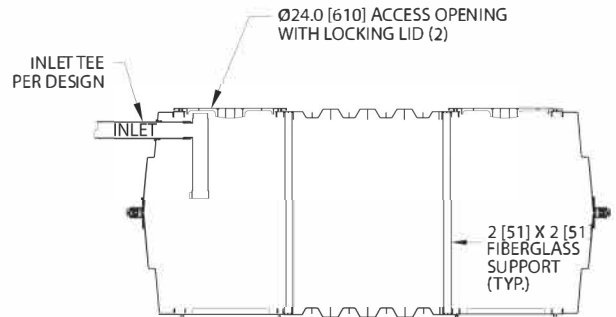


TOP VIEW

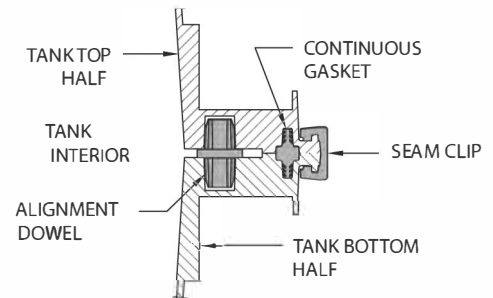
TOP VIEW



END VIEW



SIDE VIEW



MID-HEIGHT SEAM SECTION

IM-Potable Water Tank Series				
Parameter		IM-550C	IM-1280C	IM-1760C
Total Capacity	gal	552	1287	1787
Length (A)	in	65	127	176
Width (B)	in	62	62	62
Height (C)	in	55	55	55
Fiberglass Supports	-	0	2	4
Max Burial Depth	in	48	48	48
Minimum Burial Depth	in	6	6	6
Maximum Pipe Diameter	in	4	6	4
Weight	lb	191	346	501



817-246-4567  
[www.rainwaterequipment.com](http://www.rainwaterequipment.com)

U.S. Patents: 4,759,661; 5,017,041; 5,156,488; 5,336,017; 5,401,116; 5,401,459; 5,511,903; 5,716,163; 5,588,778; 5,839,844 Canadian Patents: 1,329,959; 2,004,564 Other patents pending. Infiltrator, Equalizer, Quick4, and SideWinder are registered trademarks of Infiltrator Systems, Inc. Infiltrator is a registered trademark in France. Infiltrator Systems, Inc. is a registered trademark in Mexico. Contour, MicroLeaching, PolyTuff, ChamberSpacer, MultiPort, PosiLock, QuickCut, QuickPlay, SnapLock and StraightLock are trademarks of Infiltrator Systems, Inc. PolyLock is a trademark of PolyLock, Inc. TUF-TITE is a registered trademark of TUF-TITE, INC. Ultra-Rib is a trademark of IPEX Inc.

© 2014 Infiltrator Systems, Inc. All rights reserved. Printed in U.S.A.

IM23 0214

Contact Infiltrator Systems' Technical Services Department for assistance at 1-800-221-4436