

Monjolin® Smart Filter Mini

For Rainwater Harvesting

320-1070 sq. ft

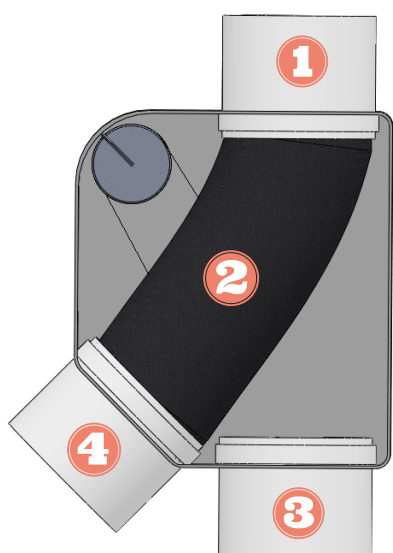
Main features:

- Flexible filter that adapts to all types of rain
- High quality filtration with a 60 microns mesh
- Actual efficiency superior to 95%, proven in our laboratory.
- Self-cleaning system that prevents water contamination.



Operating mode:

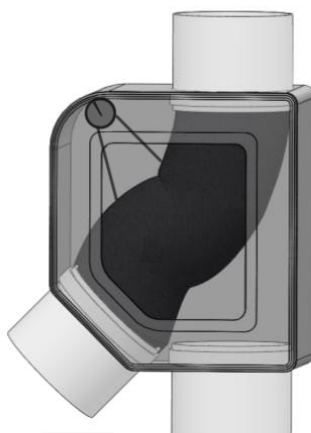
- The harvested water reaches the filter through the upper inlet (1).
- Right after, the water comes into contact with the filter element (2), which separates it from impurities.
- The water that passes through the mesh is free of debris larger than 60 microns and are conducted through the filtered water outlet (3).
- Impurities are taken to the side outlet (4) to be discarded. Its flexible body allows the filter to adapt its shape to different rain intensities, ensuring its high performance.



Light Rain



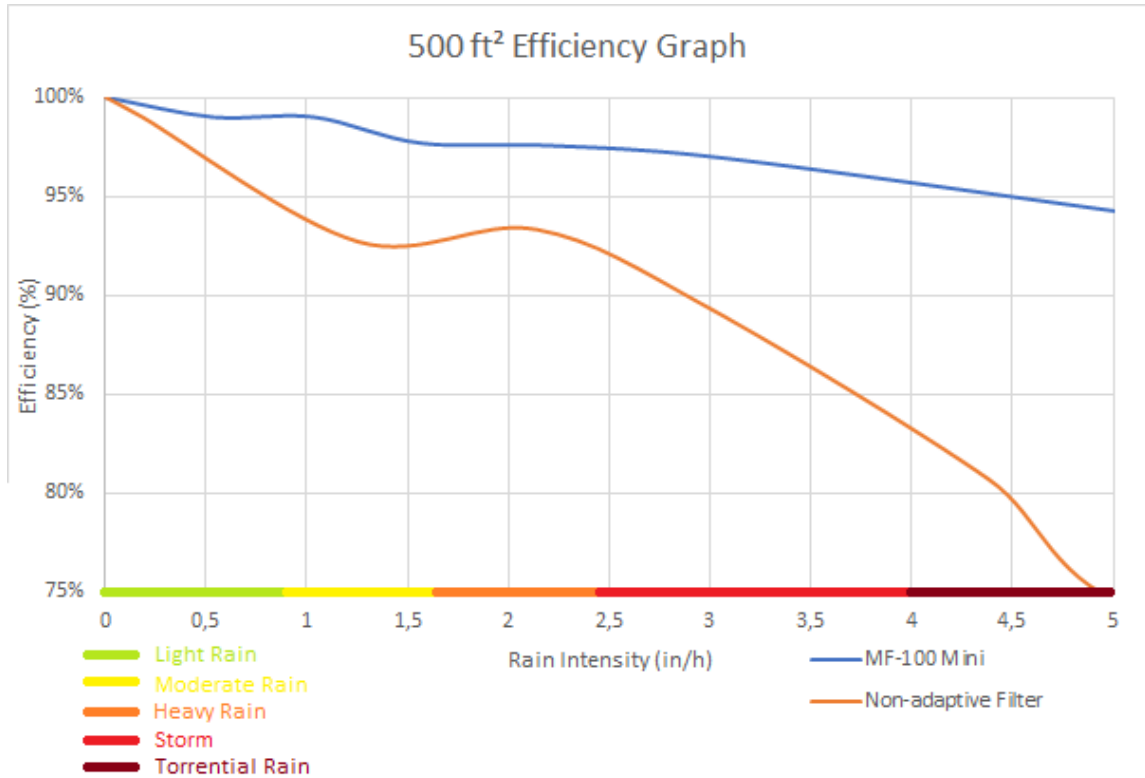
Moderate Rain



Heavy Rain



Monjolin® Smart Filter Mini



Specifications:

Filtering area: 2960 cm² (458.8 in²)

Filtering capacity: 6 L/s (95 gal/min)

Mesh opening: 60 microns (0.06 mm²)

Width: 31.4 cm (12.4 in)

Height: 45.5 cm (17.9 in)

Depth: 15.5 cm (6.1 in)

Inlet and Outlets ID: 100 mm (3.94 in)

Catchment area: 30-100 m² (320-1070 ft²)

