

THE NEW

Gutterglove[®] PRO

The Nation's **Most Trusted** Gutter Guards.™

INSTALL & USERS GUIDE

Contact, helpful information and suggested tools 1

STEP 1: Choose your gutter and roof configuration 2

STEP 2: The basics in every installation 4

STEP 3: Converting Gutterglove Pro to fit a 6" gutter 5

STEP 4: Important - Remove any gaps 6

Maintaining your gutter guards 7

Warranty 8

CONTACT INFORMATION

Gutterglove
8860 Industrial Avenue, Suite 140
Roseville, California 95678

Support Phone: (888) 334-1209
Monday through Friday 8am to 5pm PST
Email: customerservice@gutterglove.com

HELPFUL INFORMATION

Clean out your gutters first: Take the time to clean out the leaves, pine needles and other debris from your gutters and downspouts.

Obey all your local building codes when installing the gutter guard!

Water test: Water test to see how Gutterglove Pro works after you do the install, wet the mesh thoroughly before you spray water on the roof.

Important information in freezing conditions: If you live in areas that have snowfall, the following issues can occur with any gutter guard.

ICICLES & ICE buildup can form on your gutter during freezing conditions. Ice dams can cause water to leak back into your home. Icicles can break and cause serious bodily harm. Properly installed, operated and maintained heating elements on your roof and gutter can melt icicles and ice dams. Use a licensed electrical contractor in good standing for installing any heating element products.

SNOW MELTING and running down your roof can run off the side of the gutter and refreeze on the ground below. Water frozen on surfaces can create slipping hazards and cause serious bodily harm. Take precautions by applying salt on these ground surface to reduce slip hazards.

SUGGESTED TOOLS



Circular Saw
Used for cutting the gutter guard. Make sure to use a non-ferrous carbide tipped blade.



Tin Snips
Any brand of tin snips are generally fine and used for trimming the mesh to cover gaps on the end caps or inside miters.



Ladder Safety
Use a ladder standoff for keeping the ladder from damaging the gutter. A popular brand like the one in the photo is "Ladder Max". Also make sure your ladder is functioning properly and rated in accordance with the proper use you are intending for your installation.

STEP 1: Choose your gutter and roof configuration

Select the diagram below that best resembles your gutter and roof scenario. This will determine whether you slide the gutter guard under the roofing material or trim the aluminum extrusion back. Once you've selected a diagram, continue to Step 2.

The diagrams refer to a roof shingle and gutter, they imply ALL roofing material types and gutter types. It doesn't matter what type of shingle or gutter you have listed below, Gutterglove Pro will install on all of them.

ROOF SHINGLE

Asphalt
Flat tile
Spanish tile
Villa tile
Stone coated steel

Corrugated steel
Standing lock seam
Wood shake
Membrane
Flat roof

GUTTER

Ogee
Fascia
Curved
Half round
Plastic

Box
Commercial

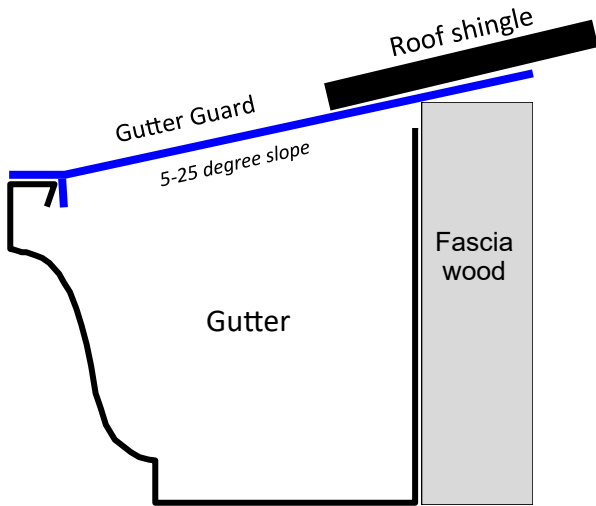


DIAGRAM A

Traditional gutter and roof configuration.
Gutterglove Pro slides under roof shingles. Ideal slope is 5 - 25 degrees so most of the debris blows off.

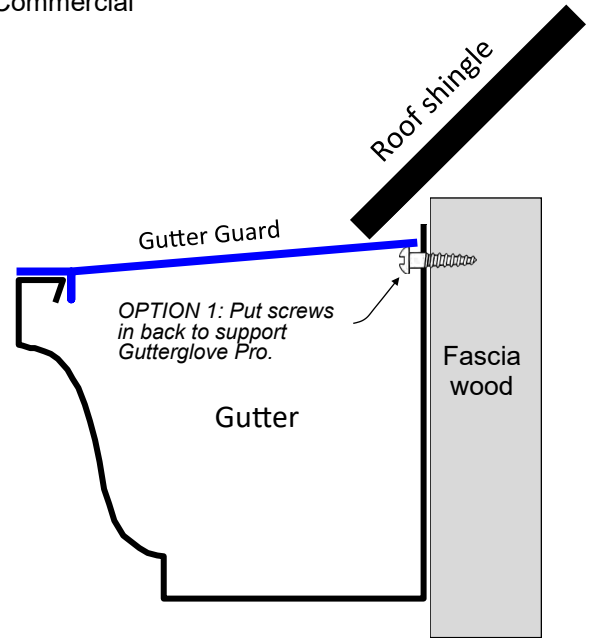
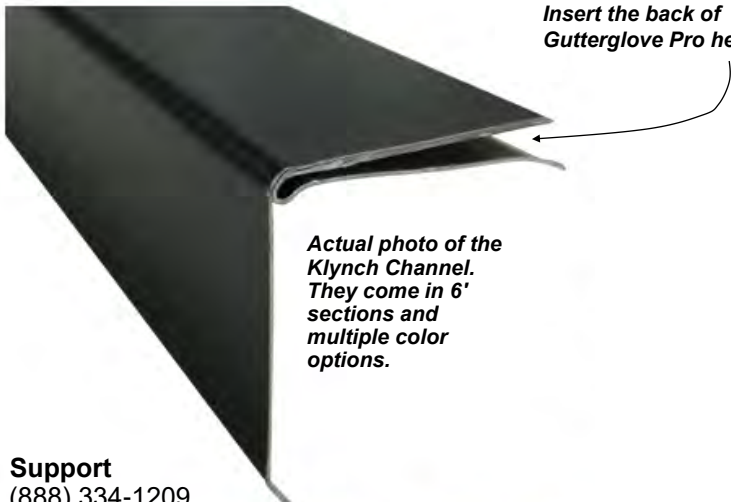


DIAGRAM B: Option 1

Steep roof OR roofing materials that don't allow Gutterglove Pro to slide under them; Trim the back of Gutterglove Pro to the width of the gutter. Then drill in four screws in fascia to support it.

Klynch Channel Can be purchased at www.LynchAluminum.com.



Actual photo of the Klynch Channel. They come in 6' sections and multiple color options.

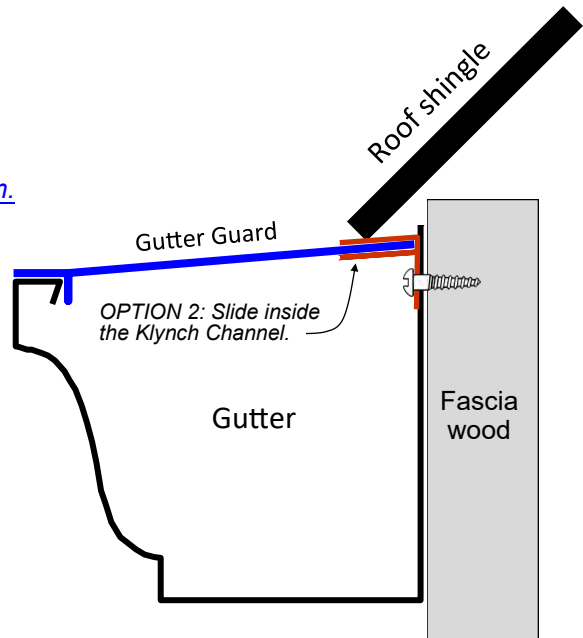


DIAGRAM B: Option 2

Steep roof OR roofing materials that don't allow Gutterglove Pro to slide under them. Trim the back of Gutterglove Pro to the width of the gutter. Then slide the back of Gutterglove Pro inside the Klynch Channel.

Support
(888) 334-1209
customerservice@gutterglove.com

STEP 1: continued

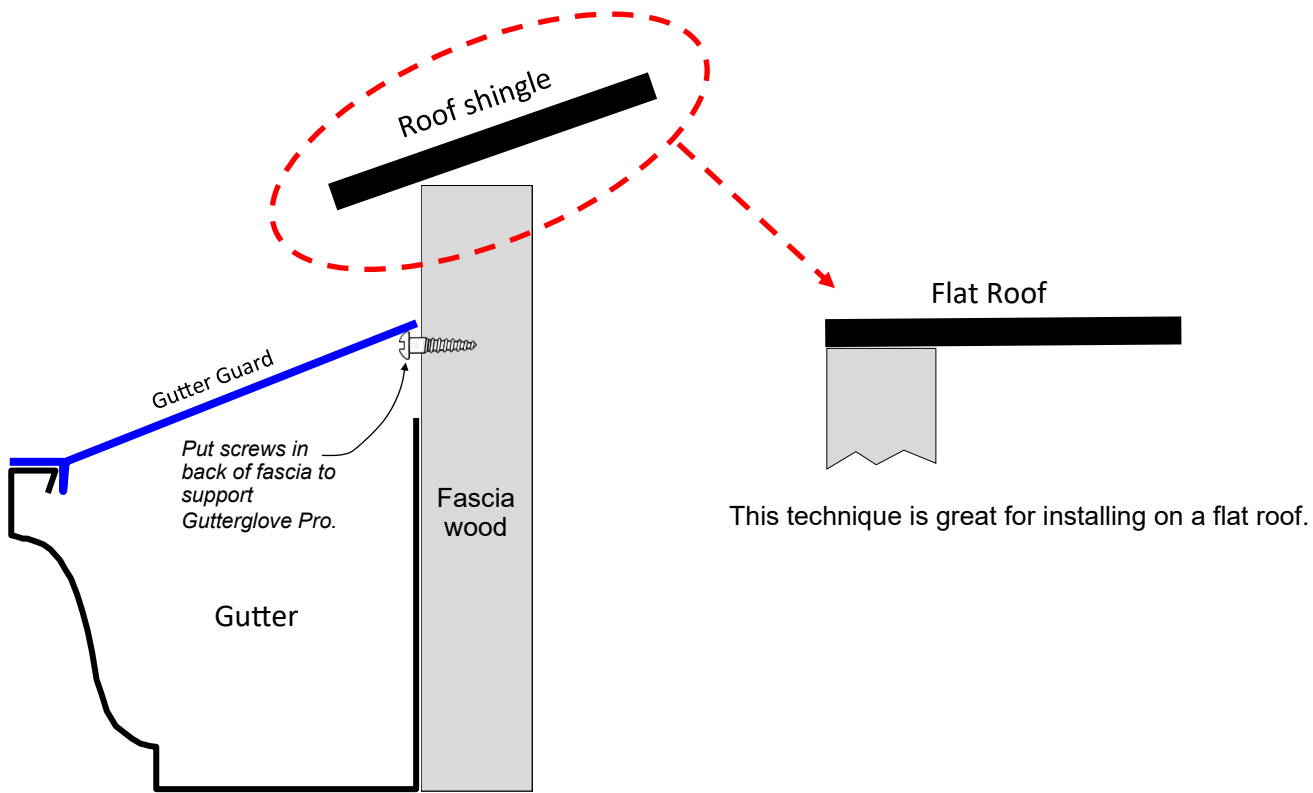


DIAGRAM C

Gutter hung low. TrimbackofGutterglove Pro and support it with either screws or the Klynch Channel.

IMPORTANT: No Roof Ramping

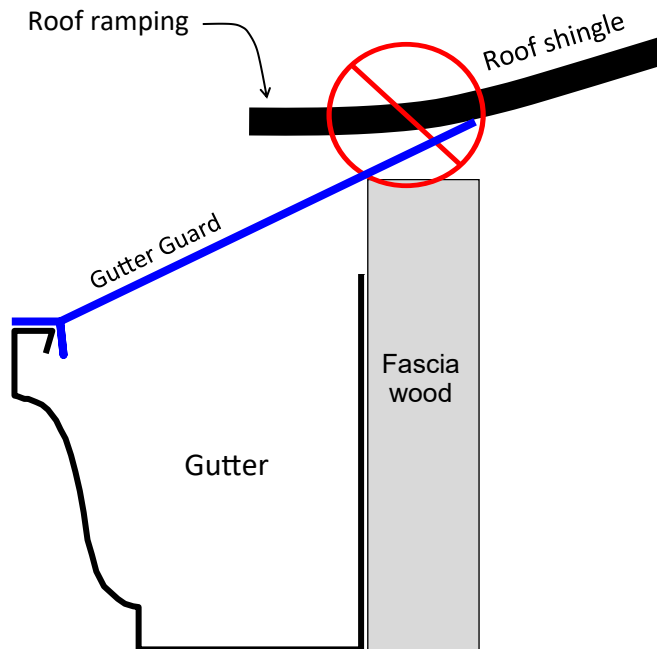


DIAGRAM D

Roof Ramping. If the gutter guard would cause the shingles to ramp up, then install Gutterglove Pro like in Diagram B or C.

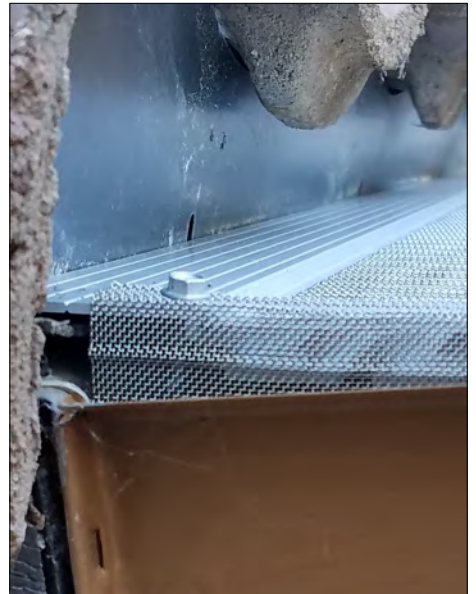
STEP 2: The basics in every installation

Joining and Cutting Sections



- Use 3 screws per each 5' section of Gutterglove Pro for fastening to the front of the gutter. We supply you with 1/2" self-tapping screws that have a 1,000 hour salt spray rated coating to help prevent corrosion.
- Mesh extends past the ends of each section. Bend mesh down on each end then butt sections up to each other.
- Cutting: Firmly fasten or clamp Gutterglove Pro unto a secure flat surface and then use a circular saw to cut sections to the desired length or to trim the back to the appropriate width. Make sure to wear safety goggles.

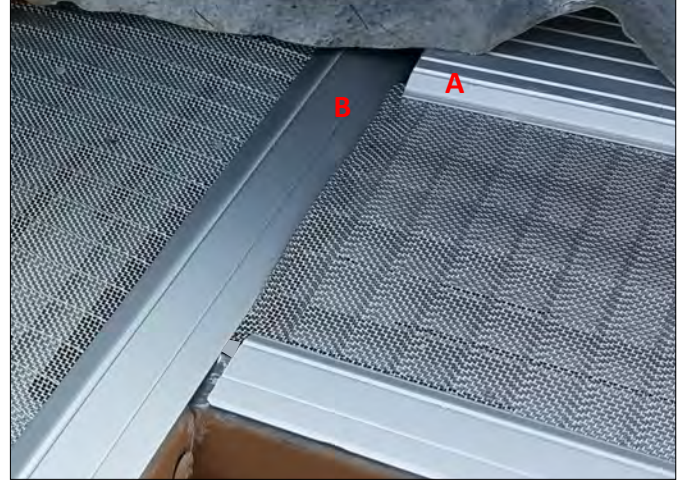
End Cap



You can use a scrap piece of mesh or piece of coil aluminum roll to cover the ends. In the photo above a scrap piece of mesh was used to cover the endcap. Closing off these gaps will also keep out unwanted insects, small animals and debris.

STEP 2: Continued

Inside Miter



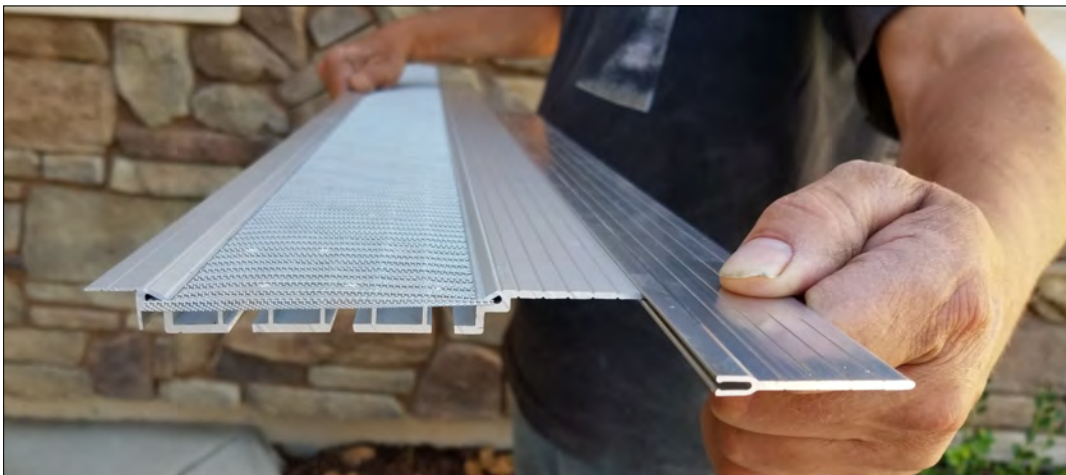
When doing an inside miter, do **not** cut each section at a 45 degree angle, this just creates a path for rainwater to flow off the gutter. Just butt ends up to each other at a normal 90 degree angle as shown in photo above. On occasion when the gutter guard is installed at a steeper angle, the back of the gutter guard "A" is much higher than the adjacent section "B", this will cause a significant gap between the two and you can use a scrap piece of mesh or coil aluminum roll to cover the gap otherwise debris can enter the gutter. Closing off these gaps will also keep out unwanted insects, small animals and debris.

Outside Miter



Cut the ends of Gutterglove Pro at approximately a 45 degree angle and butt them up together. You can use a piece of coil aluminum roll and trim it to fit over the joint so it has a more clean finished look.

Converting Gutterglove Pro to Fit a 6 Inch Gutter



You can purchase extensions that slide on the back of Gutterglove Pro for increasing the width to approximately 7 inches so it will fit a 6 inch gutter.

****You can slide extensions on the back of each other to make wider widths to fit larger commercial size gutters.**

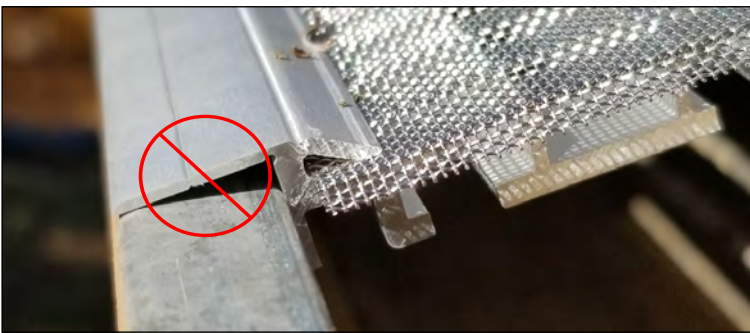
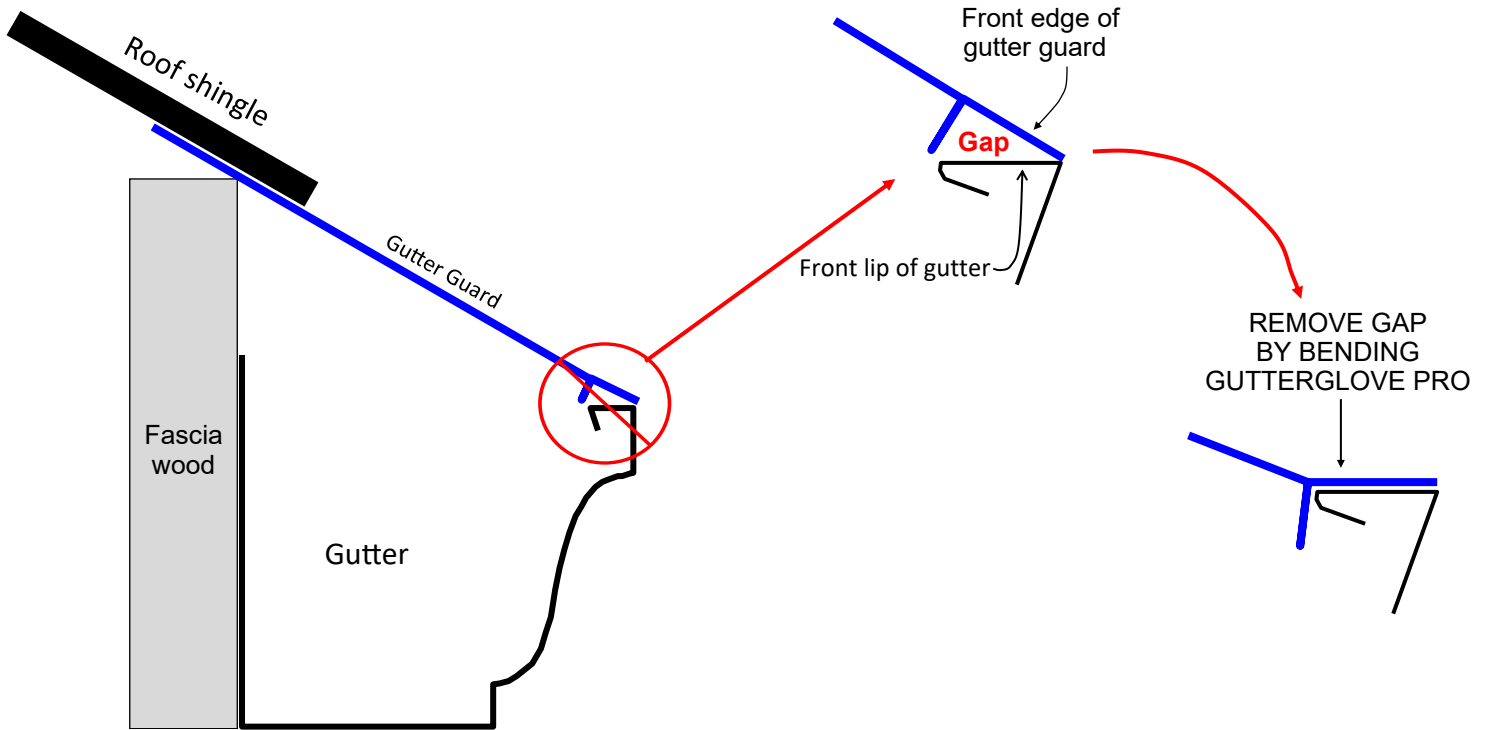
NOTE: When sliding extensions on the back of each other, use any kind of lubricant (oil, butter, WD40 etc) so they will slide easily. No lubricant needed though when sliding on the back of Gutterglove Pro itself.

STEP 3: Important - Remove any gaps!

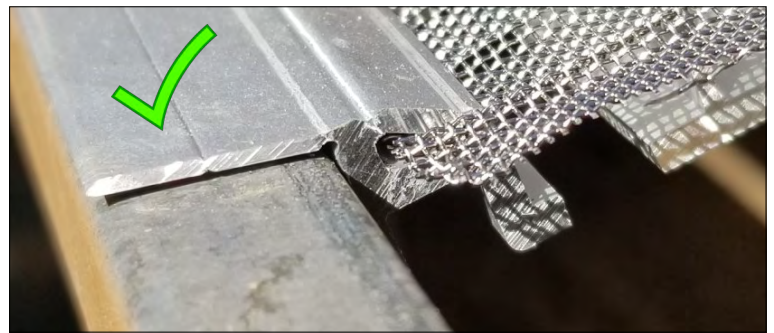
Follow this rule so rainwater flows smoothly into your gutter and not over the front edge of your gutter.

RULE #1

Remove gap: Make sure the front lip of the gutter guard is flat against the front lip of the gutter by removing gap.



INCORRECT: Gap can allow water runoff.



CORRECT: Gap removed.

Bending Gutterglove Pro: Bending the front aluminum of Gutterglove Pro to remove any gaps is easy to do by following the steps below:



Saw a blades width, 5/8" deep groove cut, 1" from the back of a 2 x 6 lumber board then place on back of truck tail gate or other flat surface.



Insert Gutterglove Pro in the groove and bend downward towards yourself.



Bend to the desired angle.

Support
(888) 334-1209
customerservice@gutterglove.com

Maintaining Your Gutter Guards

“The best part is that the manufacturer [Gutterglove, Inc.] actually tells the truth. It tells homeowners that they will periodically have to clean dried organic debris from the top of the gutter guard.” - The Washington Post

How to keep your gutter guards at peak performance.

Your new gutter guards are designed to be easy to maintain. Follow the tips below for easy maintenance.

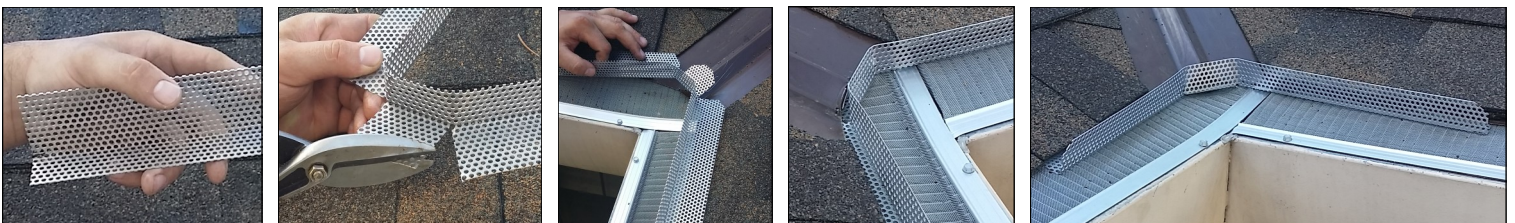
1. Periodically inspect your gutter guards for any debris that may not have blown off, particularly where two sections of your roof come together (valley) or in areas that are protected from wind.
2. Brush off any accumulated debris. We created “The Gutter Guard Brush” for just this purpose. Screw the brush on the end of an extension pole, then from the ground, reach up and brush off the debris. Be sure to wear protective eye wear.
3. Get more information at TheGutterGuardBrush.com.***



***Patents pending

What to consider if you notice rainwater flowing over the front of your gutter.

1. Look on top of your gutter guards and see if there is any debris on them. Follow the maintenance instructions above to remove the debris.
2. Confirm there is no gap between the front edge of your gutter guards and the front lip of your gutter. Be sure that the mesh trough is below the front lip of your gutter. Make small adjustments to your gutter guards per the recommended installation to correct this.
3. If the overflow is occurring where two sections of your roof come together (valley), start by removing any accumulated debris. If there is still overflow, you may need a rainwater diverter. A rainwater diverter (see photos below) helps disperse rainwater over a wider area. The diverter is made out of an aluminum material, perforated with small round holes and attaches just above your gutter guards at the end of your roof valley or other high-flow areas of your roof.
4. Get more information and purchasing details at RainwaterDiverters.com.



Contact our team at 888-334-1209 or customerservice@gutterglove.com for further clarification or additional guidance.



40 Year Limited Parts Warranty

Gutterglove, Inc. (herein referred to as GGI) warrants to the original purchaser that its specially designed Gutterglove Pro will be free from defects in manufactured parts, and agrees that it will, at its option only, either repair the defect or replace the defective part thereof with a new or reconditioned equivalent. This Limited Warranty is valid for 40 (forty) years for parts only and does not include cost of labor for re-installation. In coastal areas, warranty is reduced to 10 (ten) years for parts only. "Coastal areas" is defined as anywhere within 5 (five) miles of the coast. Shipping costs will be paid by GGI. The above named item is subject to the following terms and conditions. No other warranty is expressed or implied in this Limited Warranty.

Coverage Exclusions and Limitations: The above mentioned warranties are void if any of the following conditions occur: Improper installation; Settlement of building structure; Structural shrinkage or distortion of structure (*Example: warping of roof or gutter over time, etc.*); Vandalism; Hail; Fire; Tornado; Windstorm; Earthquakes; Lightning; Protective liquids or any type of roof preservation product applied to roof tops to extend the life of a roof; Maintenance procedures are not followed properly; Tree sapping on mesh; Insect/bird droppings on mesh; Accidental damage; Acts of God; Misuse or abuse of the gutter guard; Mildew accumulation; Paint overspray; Moss accumulation; Impact of foreign objects; Caustic atmospheric conditions (*Example: Acid rain, harmful chemicals, salt spray, etc.*) or any other causes beyond the control of GGI. It is the owner(s) responsibility to unclog the mesh in the event it gets clogged. Icicles can form and ice can form on top of Gutterglove Pro where freezing temperatures are present.

GGI's obligation under this warranty shall at no time exceed the original purchase price of this product at time of sale, but not for installation or re-installation costs. These warranties cover only Gutterglove Pro and do not cover the gutter or any part of the building structure.

GGI reserves the right to withdraw this warranty from the market at any time. Any and all warranties in effect at the time of removal will not be affected by the withdrawal, and will remain in effect until their expiration. This warranty is transferable to any new property owner.

GGI will not be liable to you or any subsequent owner(s) for a breach of any written or oral express warranties, such as those given to you by a contractor, sub-contractor or installer. Any implied warranties imposed by law, such as the implied warranties of merchantability and fitness for a particular purpose are limited in time to the duration of this express warranty. GGI shall not be liable for any consequential damages for breach of any express, written, oral, or implied warranty on any Gutterglove Pro. Your exclusive remedy shall be repair or replacement solely at GGI's option, only on terms stated in the warranties.

Activation of Warranty: This warranty becomes effective at time of purchase. Retain this document with original purchase receipt. Failure to do so will render this warranty null and void.

Claims Procedure: Any claim made hereunder must be presented to GGI within the warranty period within a reasonable period of time after discovering the defect. The claim should make reference to original date of installation, the purchaser's name, address, phone number and a copy of the original receipt.

Contact Gutterglove, Inc. at (888) 334-1209
or by mail to Gutterglove, Inc., 8860 Industrial Avenue, Suite 140, Roseville, California 95678.